

# HEALTH & SAFETY POLICY

## Scope

This policy applies to John Lyon School, which comprises the 'Senior School' and the 'Prep School'. All references to 'the School' refer to John Lyon School except where otherwise specified.

## PART I – STATEMENT OF INTENT<sup>1</sup>

The School places the greatest importance on health and safety matters and undertakes to conduct its operations in such a way as to ensure the health and safety of all its pupils, employees, visitors and the general public.

This Policy will be reviewed by the full Board of Governors at its Autumn Term meeting and formally endorsed by them for its adoption at the School.

This policy has been compiled with regard to legislation, guidance and good practice, including:

- The Health and Safety at Work Act 1974; HSWA
- Management of Health and Safety at Work Regulations
- Control of Substances Hazardous to Health Regulations 2002
- DfE's advice on health and safety for schools, including the non-statutory advice contained in H&S Advice on Legal Duties and Powers for Local Authorities, Head Teachers and Governing bodies 2014
- Management of Health and Safety at Work Regulations 1999; MHSWR
- Advice and guidance provided by HSE.
- ISI – Part 3: Welfare, health and safety of pupils

The school is dedicated to following the advice above and commits to the following:

- Providing and maintaining safe premises, plant and work equipment.
- Information, instruction, training and supervision for safety and safe systems of work.
- Ensuring safe arrangements are taken for the handling, storage and transport of articles and substances.
- Ensuring adequate facilities are provided for the welfare of pupils, employees and visitors.
- To consult with our employees on matters affecting their Health & Safety.
- To provide and maintain safe premises, plant and work equipment.
- Investigate accidents and incidents and take steps to prevent a re-occurrence.
- The above list is not exhaustive.

---

<sup>1</sup> HSE: State your general policy on health and safety at work, including your commitment to managing health and safety and your aims. As the employer or most senior person in the company, you should sign it and review it regularly.

The School aims to create and develop a culture of health and safety at work, encouraging and supporting all employees to participate in developing and practising safe working methods and to have regard for the welfare of themselves and others.

We are confident that all employees will comply with their obligation to act in a safe manner and will fully cooperate with the School's Governing Body in matters of health, safety and welfare.

## Aims and Objectives

The School attaches the utmost importance to the safety, health and welfare of its employees, pupils and visitors. The School will comply with the provisions of the Health and Safety at Work Act 1974 and all subsequent regulations.

The School will take steps so far as is reasonably practicable to ensure that the workplace is a safe and healthy environment in which its employees, pupils, contractors and other persons affected by School operations can work.

The School will make the necessary assessments, identify safety training and provide information and supervision for employees at all levels. It will consult on a regular basis with all employees/staff representatives with regards to health and safety issues with a Health and Safety meeting taking place at least once a term. It will provide the necessary safety devices and protective clothing, provided that a safer working environment cannot be achieved by any other means.

## Policy Review

This policy is reviewed and revised at least once a year. The Governors Health and Safety Oversight Committee review and recommend the policy to the Board for approval, usually at its meeting in the Autumn Term. Reviews consider:

**Planning** - The elimination of risks in the workplace by careful selection and design of facilities, equipment and processes, together with effective control measures and training for employees.

**Organisation** - Reviewing the School's organisation including changes to ensure that responsibilities for health and safety are clearly defined at all times to all employees at every level.

**Control** - Ensuring that the safety requirements are implemented throughout the School by all employees and that training is regularly conducted in support of these standards. All employees are reminded annually of their duty to co-operate with The School to ensure good safety management and to comply with the health and safety policy.

**Monitoring and Review** - All relevant job specifications will contain safety requirements and instructions highlighting health and safety responsibilities. The School Health and Safety Committee consider risk assessments, accidents, near misses, evacuation drills and false alarms, safety improvements and other H&S aspects and audits.

## Health and Safety Management

The School's Governors have overall responsibility for the implementation of the policy and will ensure that sufficient finance provision is made available to support the policy.

In order to achieve the aims and objectives of the Health and Safety Policy these issues will be brought regularly to the attention of the School's management team during management and Governors' meetings.

New employees receive a health and safety briefing and confirm that they have read and understood the Health and Safety Policy, the latest version of which is available on the Staff Hub and in the Staff Handbook, with previous versions archived for reference purposes.

## PART 2 – RESPONSIBILITIES FOR HEALTH AND SAFETY<sup>2</sup>

### The Board of Governors

The Board of Governors recognises its collective responsibility for health and safety in its role as employer. In line with section 37 of the Health and Safety at Work Act 1974, the Board of Governors ("the Board") is responsible for actively monitoring and controlling health and safety management within the School by:

- requiring such information, including this policy, to be presented to them as may be necessary for the efficient discharge of their responsibility;
- approving the allocation of sufficient resources both personnel and financial to meet the demands of health and safety legislation;
- ensuring that delegated functions are carried out in such a manner as to meet the legal and ethical requirements of health and safety legislation that could be expected of an employer;
- being responsible for health and safety matters at the School with one selected Governor having specific oversight;
- ensuring there are procedures in place for establishing and maintaining a safe environment, so far as is reasonably practicable, throughout all areas used by the School to comply fully with the Health and Safety at Work Act 1974 and all other statutory provisions and codes of practice.

The minutes of the Committee meetings are reviewed by the **Governors Health and Safety Oversight Committee** and are stored here: [H&S School Committee Meetings](#)

### The Health and Safety Manager

The School Governors bear ultimate responsibility to provide leadership on all matters of health and safety.

Within the School, the Head has delegated authority from the Board to ensure that the School meets the requirements of legislation and guidance relating to health and safety. The Head holds overall responsibility at the Operational level, with this responsibility routinely delegated to the Bursar. The Bursar further delegates the day-to-day role to the Head of Estates and Health & Safety, who will ensure, so far as is reasonably practicable, that the School's policy on health and safety at work is effectively implemented. The Head of Estates and Health & Safety is the School's **Health and Safety Manager**.

---

<sup>2</sup> HSE: List names, positions and roles of the people in your business who have specific responsibility for health and safety.

In the absence of the Health and Safety Manager the responsibilities for health and safety at work will be assumed by the **Health and Safety Compliance Officer** who provides the day-to-day supervision of operational health and safety. Responsibilities are detailed in the organisational chart below.

The Health and Safety Manager has oversight of the School's Health and Safety provision, and ensures that:

- the School has an approved Health and Safety Policy and practices, which are implemented;
- there are adequate personnel and financial resources allocated to health and safety;
- health and safety is accorded such status as to encourage the commitment, cooperation and involvement of all staff;
- the School actively promotes an awareness and acceptance of good practice in health and safety;
- disciplining of any member of staff found guilty of ignoring or failing to implement approved procedures and practices;
- appropriate inspection, monitoring and auditing procedures are agreed and implemented;
- there are adequate arrangements for staff training in order to provide the expertise in health and safety required;
- there are regular meetings and performance reviews of health and safety and an agreed plan for future development;
- development of an awareness of health and safety and an acceptance of individual responsibility among employees, pupils, visitors and contractors;
- cover the maintenance of safety records, accident investigations, assessments and inspections.

He/she will familiarise himself/herself with all relevant health and safety legislation and take expert advice if required.

## Head of Estates and Health and Safety

- Provide positive leadership for the school on Health and Safety issues and promote the adoption of Health and Safety best practice.
- Promote an enthusiastic Health and Safety culture that delivers positive commitment to and engages all employees in continuous improvement in H&S performance.
- Provide assistance and advice to the Bursar with Health & Safety responsibility at operational area, divisional and business unit level as required.
- Ensure that there are appropriate processes in place for alerting the school to significant accidents and incidents and where appropriate be involved in their investigation and ensure that they are adequately reported.
- Review reports of accident and incident investigations, identify any trends and ensure that there is an appropriate response to prevent future recurrence.
- Keep abreast of developments in Health and Safety legislation and, where appropriate, represent the school interest in any consultation process.
- Represent the school through involvement with appropriate external Health and Safety forums, networks, industry and regulatory bodies.

- Monitoring and evaluating the School's Health and Safety Policy across all sites. ;
- Carrying out where necessary an investigation into those accidents, incidents which have been reported to the Health and Safety Executive, as well as any other accidents as necessary.
- Ensuring that the school meets the requirements of Health and Safety legislation, regulations and approved codes of practice as well as the schools own codes of practice and procedures;
- Liaising with the schools relevant staff to ensure that all statutory inspections and testing in accordance with the schools procedures are being conducted.
- Ensuring that accident reports are recorded in the necessary Registers under the Reporting of Incidents, Diseases and Dangerous Occurrences Regulations (RIDDOR). Report any notifiable accidents, diseases and dangerous occurrences under RIDDOR to the relevant enforcing body and ensure that the relevant Manager has carried out an investigation of the accident/incident.
- Liaising with visiting enforcement agencies, e.g. Health and Safety Executive Inspectors, and affording them all the facilities that they require. Notifying the Governors of any Enforcement Notices served on the Company.

## Health and Safety Compliance Officer

The H&S Compliance Officer reports to the Head of Estate and H&S and ultimately to the Bursar. The Health and Safety Compliance Officer will deputise for the Head of Estates and Health and Safety in relation to all aspects of their role outlined above. School Health and Safety Committee

## School Health and Safety Committee

The schools Health and Safety Committee comprises the Bursar, Head of Estates and Health & Safety and H&S Compliance Officer, as well as several staff with health and safety responsibilities covering a range of management, teaching and support functions across all School sites (Senior School, Prep School and Sudbury Fields). It meets on at least a termly basis.

### Membership:

Mr Nigel Slater, Bursar

Mr Lawley Exelby, Head of Estates and Health & Safety

Mrs Anita Forika Health and Safety Compliance Officer

Mr Jonathan Rowe, Assistant Head (Wellbeing) & DSL

Ms Emily Sherr , Deputy Head Pastoral (Prep) and Designated Safeguarding Lead (Prep)

Mr Adam Ling, Director of Sport

Mr Andre Antoine , Head of Sports (Prep) / Head of Year & Educational Visits Coordinator

Mr Chris Lynch. Grounds Manager

Miss Lorraine Mann, CCF, Educational Visits Coordinator and Transport Manager

Mrs Harjit Jandu , HR Officer Mrs Korinna Vosper , Science Technician

Mrs Laura Godfrey , DT and Physics Technician

Mrs Bina Gurung , School Nurse

The Governor with Oversight Responsibility for Health and Safety, the Head, Head of Prep, and Deputy Heads will attend as required. Other members of staff attend the committee by invitation to address health and safety matters under their remit. Minutes of the School Health and Safety Committee are reviewed by the Governors Health and Safety Oversight Committee as well as the Senior Leadership Team.

## Management and Supervision

Managers and Supervisors of staff will promote positive attitudes towards health and safety and ensure the tasks carried out by their line-manages are performed with due care.

Those with a management or supervisory role will:

- ensure all new employees are fully familiar with the School's Health and Safety Policy, health and safety matters appropriate to their duties including accident reporting, emergency procedures, fire precautions, code of safe conduct and the location of first aid boxes;
- provide adequate information, instruction, training and supervision to ensure the health and safety of employees and pupils;
- cooperate with and participate in the investigation of all accidents and conduct of assessments and inspections;
- ensure the maintenance of good housekeeping standards;
- review the safe operation of all work equipment;
- within their area of authority, regularly inspect the workplace with regard to the suitability of equipment provided for the health and safety of employees, check work methods and practices to ensure safe systems of work and inspect arrangements for the use, handling, storing and transport of articles and substances;
- carry out risk assessments within their departments and maintain a record of their findings.

## All Staff

A safe and healthy workplace can only be achieved with the full staff cooperation. All employees have a responsibility to do all they can to prevent an injury to themselves, their colleagues and others affected by their actions or omissions at work and cooperate with the School on matters of health, safety and welfare, and safeguard all persons to whom the School owes a duty of care, including pupils, parents, and visitors.

Every member of staff is required to:

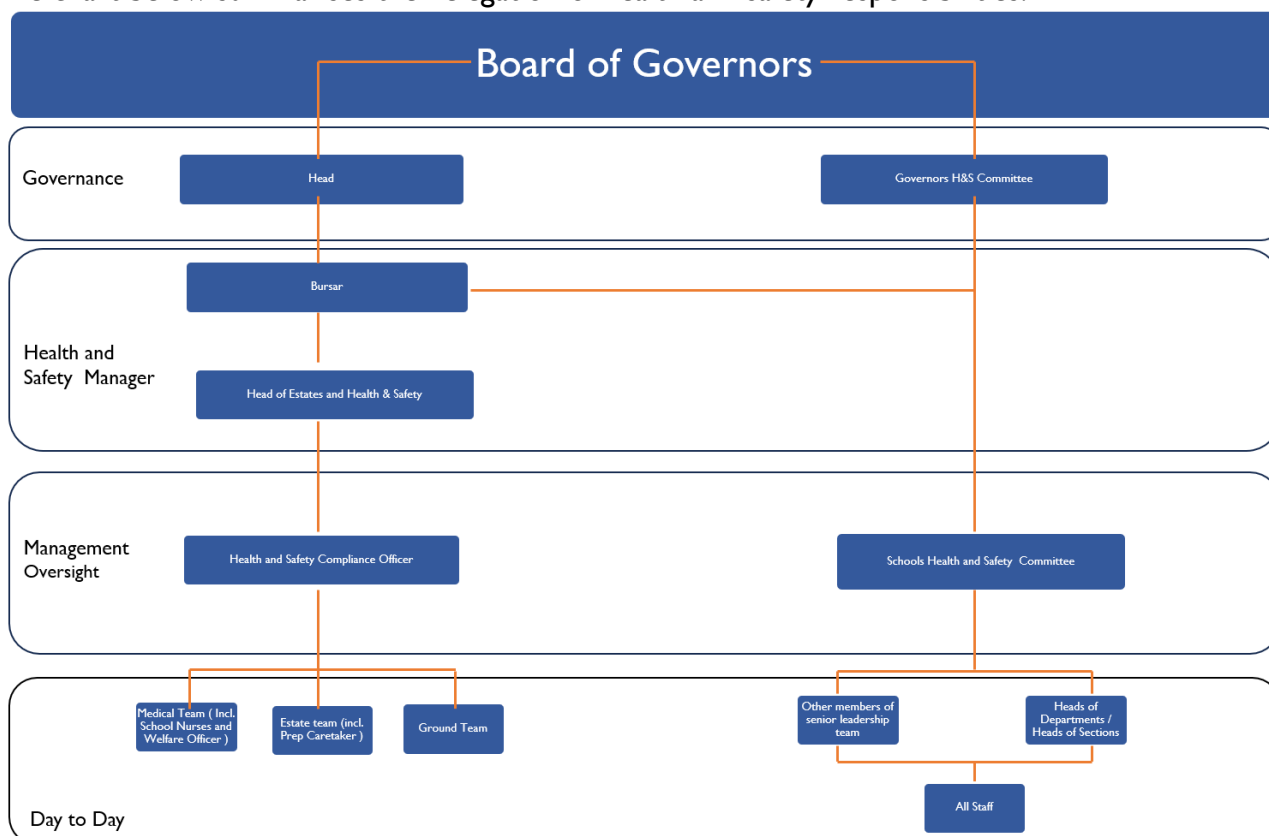
- familiarise themselves with, and adhere to the School's Health and Safety Policy and any other safety legislation and codes of practice that are relevant to the work of the department in which they work;
- obey all safety rules and procedures, including the wearing of protective clothing and the use of protective devices as specified by the School's risk assessments;
- exercise their awareness, alertness, self-control and common sense to take reasonable care for the health and safety of themselves, colleagues, pupils, visitors and any other persons who may be affected by their acts or omissions at work;
- report promptly to their Head of Department and the Estates team all hazards, potential hazards, defects in premises, plant, equipment or facilities using the School's software provision, as well as any shortcomings in the School's work systems or procedures;
- ensure that both staff and pupils are applying health and safety regulations, rules, routines and procedures effectively;
- be familiar with the school fire precautions and evacuation procedures from the Fire Safety Policy for the areas in which they work;
- ensure that all plant, machinery and equipment are in good and safe working order, adequately guarded as appropriate;

- ensure that all plant, machinery and equipment is only used in line with agreed Risk Assessments and Safe systems of work, using the correct equipment for the job and wearing any protective equipment or safety devices supplied;
- report all accidents that cause injury to any person, to the School's Health and Safety Manager;
- Seek advice from the Health and Safety Manager on any health and safety requirements;
- take an active interest in promoting health and safety and suggest ways of reducing risks.

The School will apply disciplinary procedures to any employee who is in breach of the School Health and Safety Policy. This includes any specific safe systems of work, instructions, training and procedures laid down for the protection of those involved in the School's operations, and for those who may become involved in them.

## Health and Safety Organisational chart

The chart below summarises the delegation of health and safety responsibilities.



Assistance is provided in particular areas, including but not limited to:

- |                           |   |
|---------------------------|---|
| • Combined Cadet Force    | School Staff Instructor                       |
| • Educational Visits      | Educational Visits Coordinator                |
| • Early Years             | Head of Early Years                           |
| • Science                 | Heads of Department                           |
| • Prep School Science     | Prep School Science teacher                   |
| • Senior School Sport     | Director of Sport (with Head of Sport (Prep)) |
| • Cocurricular activities | Head of Activities                            |
| • Swimming (Senior)       | Director of Sport (with Head of Sport (Prep)) |

## PART 3 - ARRANGEMENTS FOR HEALTH AND SAFETY<sup>3</sup>

### Practical arrangements

The School's work programmes will, so far as is reasonably practicable, adopt good safety practices, including:

- the safe use, storage, handling and transport of articles and substances;

<sup>3</sup> HSE: Give details of practical arrangements you have in place, showing how you will achieve your health and safety policy aims. This could include, for example, doing a risk assessment, training employees and using safety signs or equipment.



- the provision of adequate information, instruction, training and supervision for employees including temporary employees and contractors;
- the provision of safe machinery and equipment regularly maintained, including the operation and maintenance of plant and systems of work;
- the provision of a safe and healthy place of work, including access and egress to and from the premises, and adequate facilities and arrangements for the welfare of employees at work;
- consideration towards the safety of pupils, staff, parents, contractors and any other members of the public accessing the premises, including those who hire the premises for tuition, social or any other activities.

The School will consider the risk to safety involved with:

- physical, chemical and biological hazards, such as machinery, chemicals, asbestos in the buildings, water quality and the use of radioactive material;
- contractors working across the School estates;
- vehicle movements within the School grounds;
- workplace arrangements, including housekeeping;
- school trips;
- work experience arrangements;
- security of premises and equipment;
- letting of School premises to outside bodies;
- specific facilities (e.g. swimming pool, archery range, sports hall, theatre, etc.)

## First Aid

The School Nurse monitors and ensures an appropriate number of current qualified First Aid personnel within each area of the site, liaising with the School Nurse for the Prep School, and notifies the School's Health and Safety Manager of any shortfall and recommend candidates for training where this is appropriate.

School policy is that a qualified First Aid person should be within easy reach of any person on the premises in the event of an accident.

The Health and Safety Manager, supported by HR, will be responsible for arranging the necessary training and ensuring that a list of qualified First Aid personnel and their locations is displayed in each building and department. Assistance may be sought from the School Nurse, who is responsible for First Aid training at the School.

## Accident Reporting

An Accident Report must be completed for all notifiable accidents, incidents, diseases and dangerous occurrences, as well as Near Misses, on School premises, or for any pupil or staff offsite on school business or trips.

Accident reports are monitored at the termly School H&S Committee meetings, and the Governors' H&S Oversight Committee, noting any patterns and verifying appropriate remedial steps have been undertaken.

**For Full and Further Guidance:**

Reference should be made to the School's [First Aid Policy](#) which can be found in the Staff Handbook.

Accident Reports are captured on the Evolve Accident Book software system to allow rigorous monitoring of accidents and any trends. Advice on completing an Accident Report can be gained from the Health and Safety Manager (Bursar) or the School Nurse.

Pupil Accident Report forms are routinely completed by the School Nurse (Welfare Officer at Prep), reviewed by the Head of Estates and Health & Safety and finally signed off by the Bursar.

## Fire and Emergencies

**For Full and Further Guidance:**

Reference should be made to the School's [Fire Safety Policy](#) and [Evacuation of the School Policy](#). Fire action notices are displayed around the School site.

## Welfare Facilities

The school is committed to providing suitable and sufficient welfare facilities to employees, in accordance with the Workplace (Health, Safety and Welfare) Regulations 1992.

Adequate numbers of clean toilets, washing and shower facilities are provided for the number of staff and visitors required to use them. Toilet paper, hot/cold water, soap and means for drying hands will always be available. In addition, drinking water and a means to prepare hot drinks and food are provided in the Kitchen. To ensure that a high standard of cleanliness and good hygiene is maintained, the facilities are cleaned daily.

## Code of Safe Conduct

- Conform to the Health and Safety Policy, all health and safety rules and signs, fire precautions and emergency procedures;
- Ensure that you understand and follow the safe operation of your duties; ask if you do not understand any aspect of these;
- Report all accidents, near misses, potential hazards and damage immediately;
- In the event that personal protective equipment or clothing is provided, it must be used and properly looked after;
- Do not interfere with or misuse anything provided for the health and safety of employees;
- Do not act in a way that could endanger yourself or others; do not play practical jokes;
- Do not run, especially on stairs or steps.
- Use handrails; never read while walking;
- Keep your work area tidy and clear of obstructions; do not leave personal possessions or department items lying around;
- Clean up any spilt liquids or solutions immediately;

- In the event of being called upon to handle bulky or heavy objects, only lift or move what you can easily manage; always bend your knees and keep your back straight - take the stress in your legs, not your back. GET ASSISTANCE if in doubt. Do not overreach; do not climb on anything not meant for the purpose; use a ladder, ensuring that it is in good condition;
- The school's electrical equipment is regularly checked (PAT tested) and is normally safe when correctly used, BUT:
  - never touch electrical equipment with wet hands
  - always disconnect electrical equipment before moving it
  - never attempt electrical repairs unless authorised
  - always keep electrical supply cables and wires away from wet areas or from where they could be stepped on, etc.
  - always switch off equipment if not in use; disconnect from the mains outside normal working hours unless instructed otherwise;

Information on any specific hazards and precautions (e.g. COSHH, DSE) will be issued as appropriate and is available from the Health and Safety Manager or H&S Compliance Officer. Training in dealing with hazards will be conducted as appropriate for those who have responsibilities in such areas.

## Display Screen Equipment

- Adapt the furniture to fit your body. The lower back needs support; adjust the backrest if necessary. Place feet flat on the floor or use a footrest and use a document holder if necessary.
- Adjust the screen to increase your comfort. Contrast and brightness may be adjusted for your individual preference. Position the VDU at a 90° angle to windows if possible.
- Dim the lights or adjust blinds/curtains if necessary but do not make the room too dark.
- Avoid wearing light coloured clothing which can reflect light on to the screen.
- Look into the distance periodically - at something at least 20 feet away.
- Vary your routine. Take a few minutes away at regular intervals to organise materials or files or to deliver completed work.
- Do some stretching exercises during the day (neck, shoulder, back, wrists, hands and fingers).

## Asbestos

In accordance with the [Control of Asbestos Regulations 2012](#), the school will protect staff, students and others potentially exposed to asbestos as much as reasonably possible. Anyone who needs to be informed of the presence of asbestos – in particular, contractors working on the School site – will be advised. No one is allowed to perform any work on the School sites that could potentially affect any asbestos present without taking the necessary precautions. Further advice can be gained from the Head of Estates and H&S as well as the H&S Compliance Officer.

## Legionella

In accordance with the [HSWA and the Control of Substances Hazardous to Health Regulations 2002](#), the School will take all reasonable steps will be taken to identify potential Legionella risks and to prevent or reduce the risk of exposure. The school will:

- Carry out a Legionella Risk Assessment
- Prepare a written scheme/plan for preventing or controlling the risk of Legionella

- Implement and manage the scheme/plan
- Keep records for a minimum of 2 years.

## Gas Safety

In accordance with the HASWA, the School will take all reasonable steps to ensure gas safety across the School sites. In particular, this will include all work on gas fittings only being carried out by a Gas Safe registered engineer who is qualified to do the work. Further advice can be gained from the Head of Estates.

**If you suspect a gas leak, inform the Head of Estates (or any member of the Estates team) to arrange for the gas supply to be turned off as soon as possible. If in doubt call the National Gas Emergency Service on 0800 111 999 and – if appropriate – evacuate the building.**

## Noise and Vibration

In accordance with the [Control of Noise at Work Regulations \(2005\)](#) and the [Control of Vibration at Work Regulations \(2005\)](#), the School will take all reasonable steps to protect employees from the risks to health from vibration. Further advice can be gained from the Head of Estates.

## Lone Working

### **For Full and Further Guidance:**

Reference should be made to the [School's Lone Working Policy](#), which can be found in the Health and Safety folder on the Staff Hub.

## Vehicles

### **For Full and Further Guidance:**

Reference should be made to the [School's Vehicle Usage Policy](#), which can be found in the Health and Safety folder on the Staff Hub.

## Information and Training

The school will provide adequate information, instruction, training, and supervision to employees in accordance with the general duties on employers under Section 2 of the Health and Safety at Work etc. Act 1974 and associated regulations.

All employees including any temporary and casual workers will be provided with information on any risks relevant to their particular activity and work area. All information, instruction and training given to employees, temporary and casual workers will be recorded on individual training records. In certain instances, employees will be asked to sign to confirm receipt or understanding of the training.

**New employees** will be informed of the general health and safety aspects of their employment and of any specific information appropriate to them by the Head of Estates and Health & Safety as part of their induction process.

**All employees** will be informed about, and trained in, health and safety matters including exposure to any identified risks when: there is a change in circumstances affecting health and safety; and repeated periodically where appropriate. Training will be conducted during the working day, or at twilight sessions, as suits the needs of the School.

## Risk Assessment

In accordance with the [Risk Assessment Policy](#), a risk assessment should usually involve identifying the hazards present in any undertaking (whether arising from work activities or from other factors, e.g. the layout of premises) and then evaluating the extent of the risks involved, taking into account whatever precautions are already being taken.

Regular and systematic inspections and risk assessments of all potentially hazardous substances and school activities will be made by, or under the authority of, the Health and Safety Manager referring to the relevant regulations and codes of practice. Specialist advice will be obtained if necessary and the risk assessments will be reviewed periodically, following an accident or near miss or following any significant changes in equipment, materials, people, premises and processes. The significant findings will be recorded and appropriate preventative and/or protective measures taken as necessary.

### **Guidance:**

The Health and Safety Manager should be sought in the first instance for risk assessment guidance.

## Temporary Staff, Contractors and Visitors

The School recognises that it owes a duty to contractors as well as employees, as stipulated by the Health and Safety at Work Act etc., Act 1974 Section 3 and the Management of Health & Safety at Work Regulations 1999.

The school will ensure that only competent contractors are selected. All Contractors working on the school's behalf are assessed to ensure that they are competent and have suitable and adequate Health and Safety arrangements in place to provide safe working practices and control of all significant hazards that may be introduced by their work.

Temporary staff, contractors and visitors will be required to conform to all health and safety requirements whilst on the School's premises. They will either be accompanied by a responsible employee at all times or will be issued with the relevant rules, procedures and specific hazard information when signing in at Main Reception on arrival at the School.

### Visitors

Employers have a duty to protect visitors (as non-employees) under section 3 of the Health and Safety at Work Act 1974. Under the Occupiers' Liability Act 1957, the employer may be liable to pay compensation to visitors injured on their premises.

Upon arrival all visitors at 'Senior School' or 'Prep School' must sign in at Reception noting who they are visiting. Reception issues a visitor pass and lanyard to be displayed at all times. All visitors must be signed out on departure.

Visitors receive basic health and safety and safeguarding instructions on arrival and this is also included on the visitors' lanyard. The staff member receiving a visitor is responsible for briefing the visitor on fire and emergency procedures.

Visitors should not be taken into any part of the School where there is a known hazard. If this is unavoidable the appropriate protective equipment must be supplied.

A plan or map of the premises together with details of any specific high-risk areas where high voltage or dangerous chemicals may be present should be available for issue to any emergency service and can be found in the Major Incident Management Plan folder, copies of which are held by the Head, the Bursar, Head of Prep, the Deputy Heads and in a sealed envelope located at the Prep School Reception and the Senior School Reception.

## No Smoking or Vaping

All School premises are non-smoking and non-vaping sites. Smoking or vaping by a staff member or pupil on any School premises is a breach of School rules and contrary to the [Staff Code of Conduct](#).

As well as constituting a fire hazard, smoking and vaping is damaging to both the smoker and other persons in close proximity. Staff members discovered smoking or vaping in a location where there is a particular fire risk or other sensitive areas will be liable to dismissal without notice.

## Further Guidance:

Reference should be also made to the following School documents:

- Fire Safety Policy
- Evacuation of the School Policy
- Fire Action Notices
- Selecting and Controlling Contractors
- Safeguarding and Child Protection Policy
- School Visitor Policy

These can be found in the Staff Handbook on the Staff Hub or obtained from the Health and Safety Manager.

Reviewed by: Bursar  
Implemented: September 2025  
Governors' Review:  
Next Review: September 2026